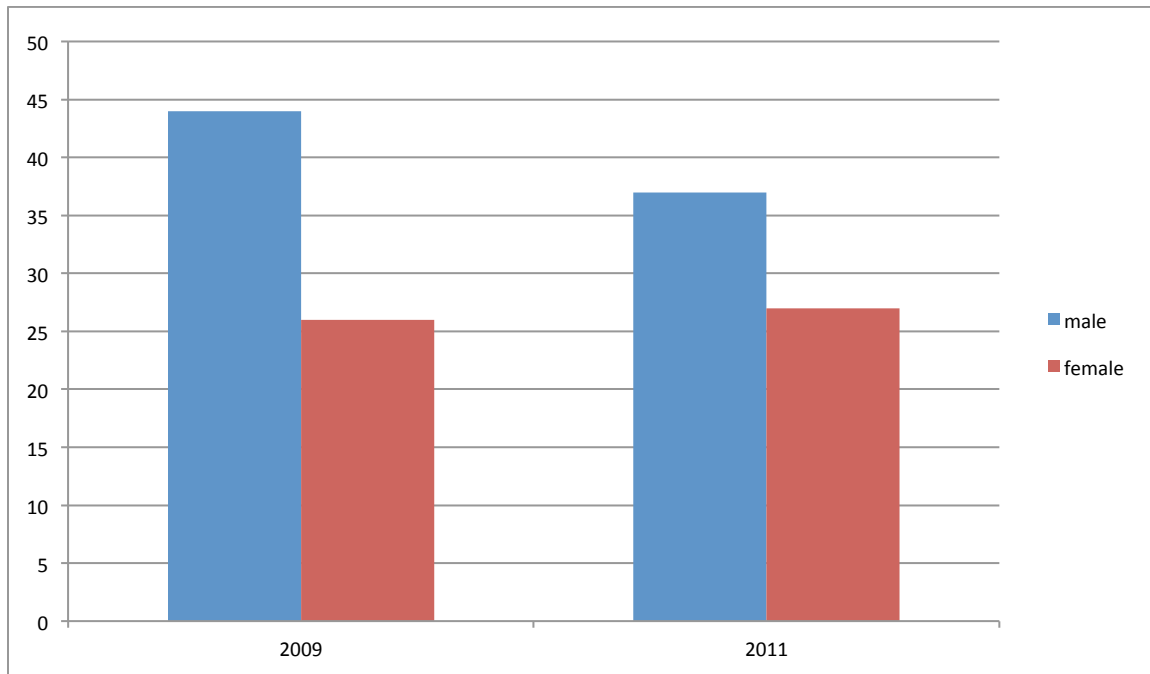


Trends in Alcohol Consumption and Consequences*

Duluth Campuses: College of St. Scholastica, Lake Superior College, University of Minnesota Duluth

- CSS: the % of males having five or more drinks last time they partied declined by 7% between 2009 and 2011 while the females % increased by 1%. However the percent of CSS students drinking five or more drinks is the lowest of the three Duluth campuses.
- LSC: the % of males having five or more drinks last time they partied declined by 11% between 2009 and 2011 while the female % decreased by 13%.
- UMD: the % of males having five or more drinks last time they partied declined by 11% between 2007 and 2010 while the females decreased by 9%.
- Duluth Police Department reports that the number of party calls in September fell by 63 between 2007 and 2011 (124 to 61).
- Duluth Police Department reports that the number of party calls by school year fell by 41% between 2007-2008 and 2010-2011.
- Negative alcohol consequences declined for all three Duluth campuses according to survey finding.

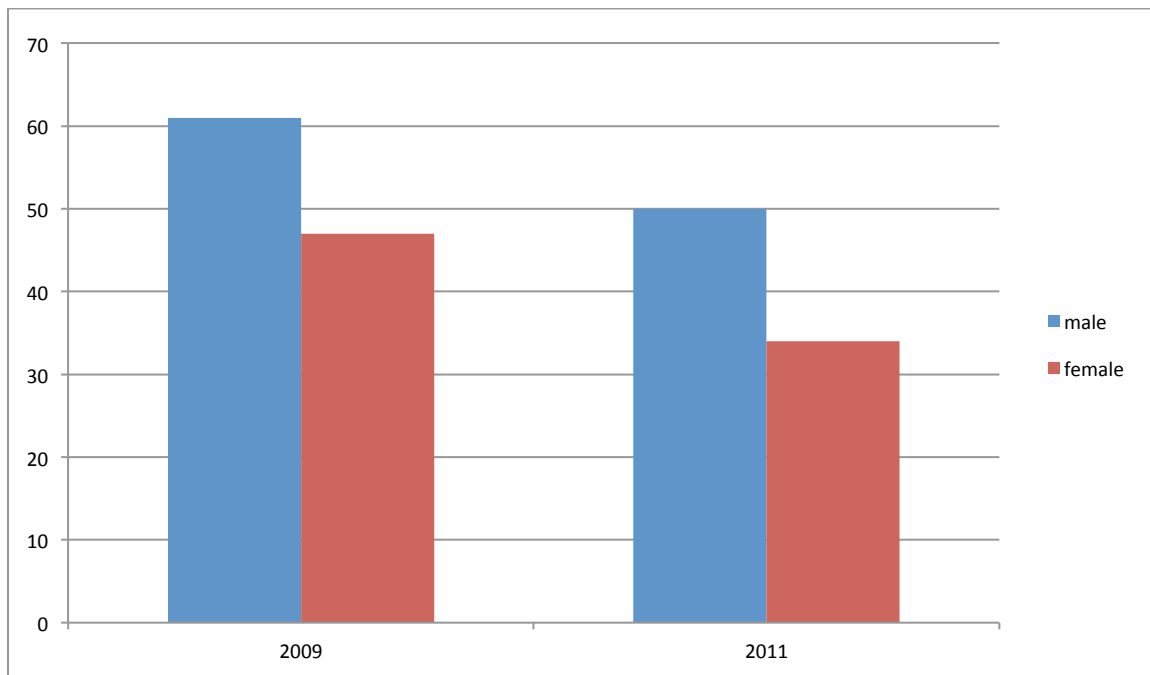
*National College Health Assessment survey for CSS and LSC, Boynton College Health Survey for UMD.



Male 44%, Female 26%

Male 37%, Female 27% [male -7%, female +1%]

COLLEGE OF ST SCHOLASTICA, % Five (5) OR MORE DRINKS LAST TIME PARTIED*

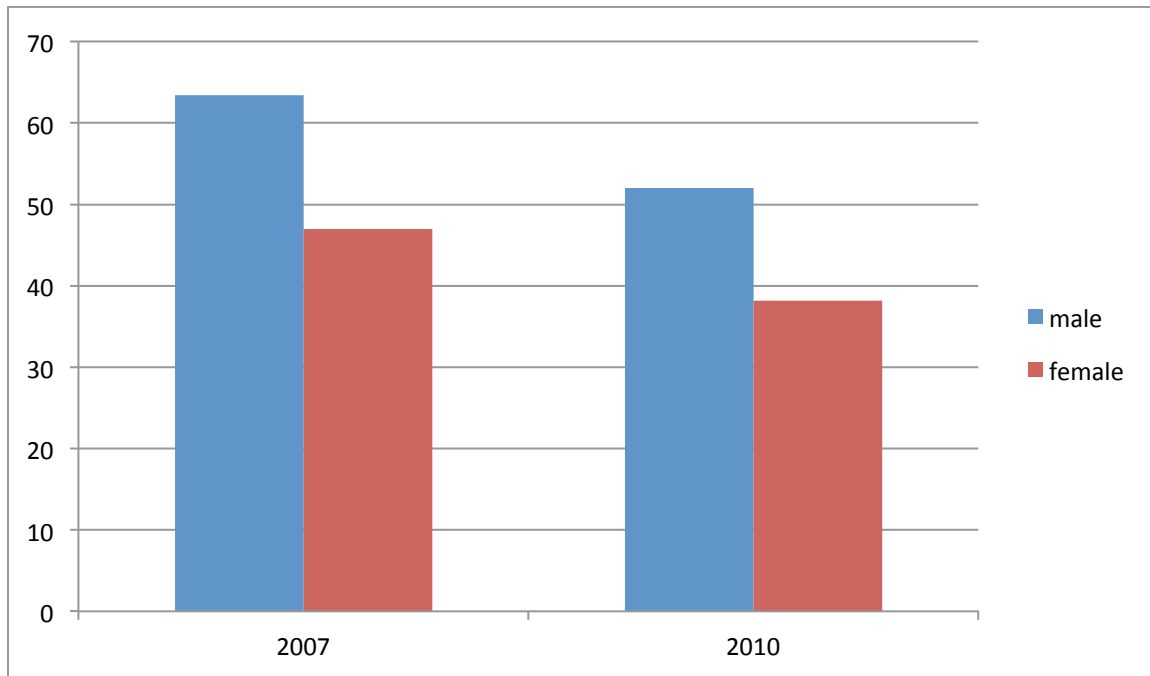


Male 61%, Female 47%

Male 50%, Female 34% [male -11%, female -13%]

LAKE SUPERIOR COLLEGE, % Five (5) OR MORE DRINKS LAST TIME PARTIED*

*National College Health Assessment 2009, 2011



Male 63%, Females 47%

Male 52%, Females 38% [males -11%, females -9%]

UNIVERSITY OF MINNESOTA DULUTH, % Five (5) OR MORE DRINKS AT ONE SITTING IN THE PAST TWO WEEKS
 UMD, Boynton Student Health Survey 2007, 2010

Total Number of DPD Party Calls in September: 2007-2011

	Total Number of Calls	Total Social Host Tickets	Total Underage Consumption Tickets	Total Disturbance Tickets	Total Disorderly Tickets	Total Other Tickets	Total Offence Tickets
2011	61	41	82	72	2	6	203
2010	82	17	49	5	9	2	82
2009	107	14	71	14	3	4	106
2008	125	0	91	15	19	7	132
2007	124	0	72	11	4	6	93
Total	499	72	365	117	37	25	616

Number of Party Calls By School Year (Sept.-June) 2007-2011

	2007-2008	2008-2009	2009-2010	2010-2011
	413	404	303	241
Difference between yrs.		(-9)	(-62)	(-101)

% difference from 2007/8 to 2010/11 = 41.6%

Negative Alcohol Consequences***College of St. Scholastica**

<u>Consequences</u>	<u>2009</u>	<u>2011</u>	<u>Change</u>
Regret	28.3%	26.1%	-2.2%
Blackout	22.9%	21.9%	-1.0%
Unprotected Sex	11.5%	12.3%	+0.8%
Injured Self	11.7%	8.9%	-2.8%
In Trouble, Police	3.0%	2.1%	-0.9%

**National College Health Assessment 2009,2011*

Negative Alcohol Consequences***Lake Superior College**

<u>Consequences</u>	<u>2009</u>	<u>2011</u>	<u>Change</u>
Regret	39.3%	32.6%	-2.7%
Blackout	37.6%	25.4%	-12.2%
Unprotected Sex	31.1%	26.9%	-4.2%
Injured Self	23.8%	16.2%	-7.6%
In Trouble, Police	9.3%	6.5%	-2.8%

**National College Health Assessment 2009,2011*

Negative Alcohol Consequences***University of Minnesota Duluth**

<u>Consequences</u>	<u>2007</u>	<u>2010</u>	<u>Change</u>
Hangover	71.9%	67.3%	-4.6%
Vomited	55.5%	49.5%	-6.1%
Regret	39.6%	33.8%	-5.8%
Blackout	34.9%	31.6%	-3.3%
Poor Test Performance	31.7%	25.8%	-5.9%

** Survey 2007,2010 Boynton College Student Health*

